



**YOUR CITY  
SMARTER,  
SAFER,  
MORE  
RESILIENT  
AND  
SUSTAINABLE**

**Honeywell**

# YOUR CITY EMPOWERED

The Internet of Things. Artificial intelligence. You've heard the buzz words. But all you really care about is what they can mean for your city. Honeywell City Suite puts it all together for you, making possible a new vision for what your city can do and the quality of life it can provide.

## HELP IMPROVE SUSTAINABILITY AND RESILIENCE

Centrally monitor and manage city systems – utilities, traffic and transit, emergency services, citizen engagement, and more – and track key performance indicators (KPIs) can help deliver on your goals.

- High uptime of critical city infrastructure during grid power outages
- Mitigate, prepare and respond to potentially climate-induced emergencies
- Help reduce city's carbon footprint and improve energy efficiency

### SOLUTION

Honeywell City Suite for:



Sustainability  
and Resilience



Early Warning and Disaster  
Management (EWDM)

## FEATURE HIGHLIGHTS

### Integrated Command & Control Center (ICCC)

- City Operations Center: Unifies data from Virtual Power Plant, Automated Metering, Energy Efficiency solutions, and more to provide 360° situational awareness; track KPIs such as enrollments, energy efficiency metrics, plus environmental impact metrics
- Emergency Response System with computer-aided dispatch
- Situation Management for major incidents and events
- Incident Management System

### Mobile Workforce Management System

- Workforce Administrator: Centralizes unified workforce administration
- Workforce App: Keeps all department users connected to the ICCC; provides real-time incident insights, enabling faster action

### Advanced Analytics Platform

- Using artificial intelligence and business intelligence
- Impact Analysis of climate-induced events on urban environment, access to utilities (power and water), and outages

### Citizen Engagement System

- Case Management System: To field service requests and integrate operations
- Citizen App Chatbot and Customer Portal: For service fulfillment, customer interaction, and more
- Citizen Outreach and Engagement capabilities: To effect behavioral response and curtail surgical load
- Open Data Portal: Provides an information-sharing platform that fosters community-driven innovation; enables communities to access data, build third-party apps, and contribute to the city's sustainability and resilience efforts



## HELP ENHANCE SAFETY AND SECURITY

A city that's better prepared to handle emergencies and cut response times can do great things for its residents.

- Help reduce incidents of crime
- Help reduce fatalities from emergencies
- Promote greater freedom of movement and peace of mind for residents

## FEATURE HIGHLIGHTS

### Integrated Command and Control Center (ICCC)

- Emergency Response System with computer aided dispatch
- Situation Management for major incidents and events
- Incident Management System
- Image, Text and Audio Analytics aid digital investigations

### Advanced Analytics Platform

Using artificial intelligence and business intelligence

- Police Patrol recommendations to reduce crime
- Crime Analytics to identify and analyze patterns/trends
- Social Media Citizen Sentiment Analytics
- Impact Analysis of climate on urban environment

### Mobile Workforce Management System

- Workforce Administrator: Centralizes unified workforce administration
- First Responder App: Enables faster dispatch to reach the scene quickly

### Citizen Engagement System

- Citizen App: Enables end-to-end service fulfillment digitally for city services, plus navigation help
- Citizen Portal: Enables greater community awareness and engagement for citizens, visitors and businesses
- EWDM Public Portal: Provides real-time incident/event status about weather conditions, rainfall, flood sensor readings, and more

## SOLUTION

Honeywell City Suite for:



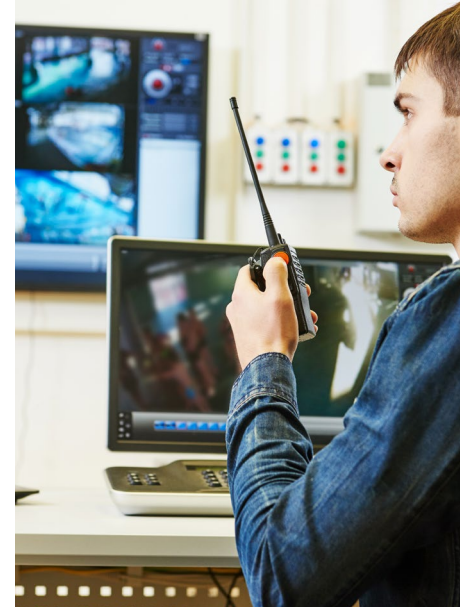
Safe Cities



Emergency Response



Early Warning and Disaster Management (EWDM)



## TRANSFORM THE PRIVATE COMMUNITY

Create a vibrant and desirable place to live and work. Foster a community that's inviting to new and repeat visitors. And behind the scenes, capitalize on a digital platform for efficient management of community assets and processes.

- Help raise occupancy rates with an appealing quality of life
- Help increase revenue from residential, commercial and retail real estate

## FEATURE HIGHLIGHTS

### Integrated Command & Control Center (ICCC)

Community Operations Center: Unifies data from multiple systems to provide 360° situational awareness; enables you to manage operations in real time, manage and respond to incidents, and more.

### Mobile Workforce Management System

- Workforce Administrator: Centralizes unified workforce administration
- Workforce App: Keeps all department users connected to the ICCC; provides real-time incident insights, enabling faster action

### Advanced Analytics Platform

Using artificial intelligence and business intelligence

- Predictive Asset Maintenance - Honeywell Forge

### Citizen Engagement System

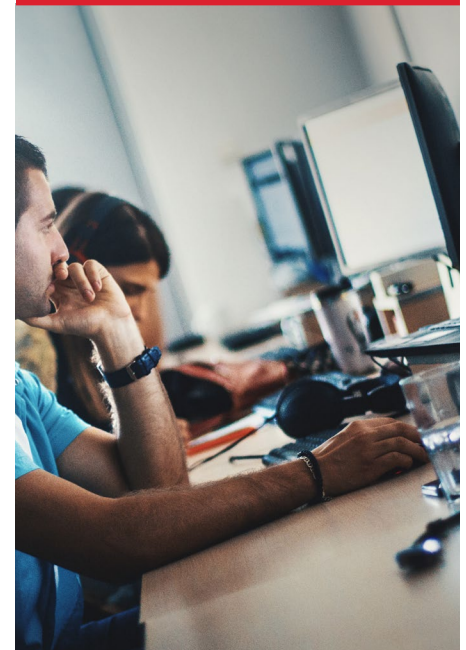
- Community App: Enables emergency support to citizens
- Visitor App: Helps visitors navigate the community, make payments, and access community services, including support for emergencies and SOS panic alerts
- Tenant App: Allows commercial and retail tenants in the community to manage their spaces
- Community Portal: Provides information and enables citizen interaction; simplifies delivery of digital services to residents, tenants and visitors

## SOLUTION

Honeywell City Suite for:



Communities



# HELP IMPROVE OPERATIONAL EFFICIENCY AND QUALITY OF LIFE

Transform the delivery of your city's services by taking steps to improve efficiency, responsiveness and asset use.

- Make your city a more productive place to do business
- Start improving residents' quality of life through better use of public utilities, transportation and parking
- Actively engage residents in shaping the place they call home

## FEATURE HIGHLIGHTS

### Integrated Command & Control Center (ICCC)

- City Operations Center: Equips your team to better monitor and operate multiple smart city systems and engage with citizens
- Public Transportation System
- Solid Waste Collection and Disposal System
- Street Light Management System
- Parking Management System

### Mobile Workforce Management System

- Workforce Administrator: Centralizes unified workforce administration
- Workforce App: Keeps all department users connected to the ICCC; provides real-time incident insights, enabling faster action

### Open Data Portal

- Provides an information-sharing platform that fosters community-driven innovation
- Enables communities to access data, build third-party apps, and deliver more services to improve residents' quality of life

### Advanced Analytics Platform

Using artificial intelligence and business intelligence

- Solid Waste Collection based on bin fill level
- Parking Revenue Recommendation based on demand
- Social Media Citizen Sentiment Analytics
- Energy Consumption Forecast

### Citizen Engagement System

- Case Management System: To field service requests and integrate interdepartmental operations
- Citizen App: Chatbot enables end-to-end service fulfillment digitally for city services, plus navigation help
- Citizen portal: Enables greater community awareness and engagement for citizens, visitors and businesses

## SOLUTION

Honeywell City Suite for:

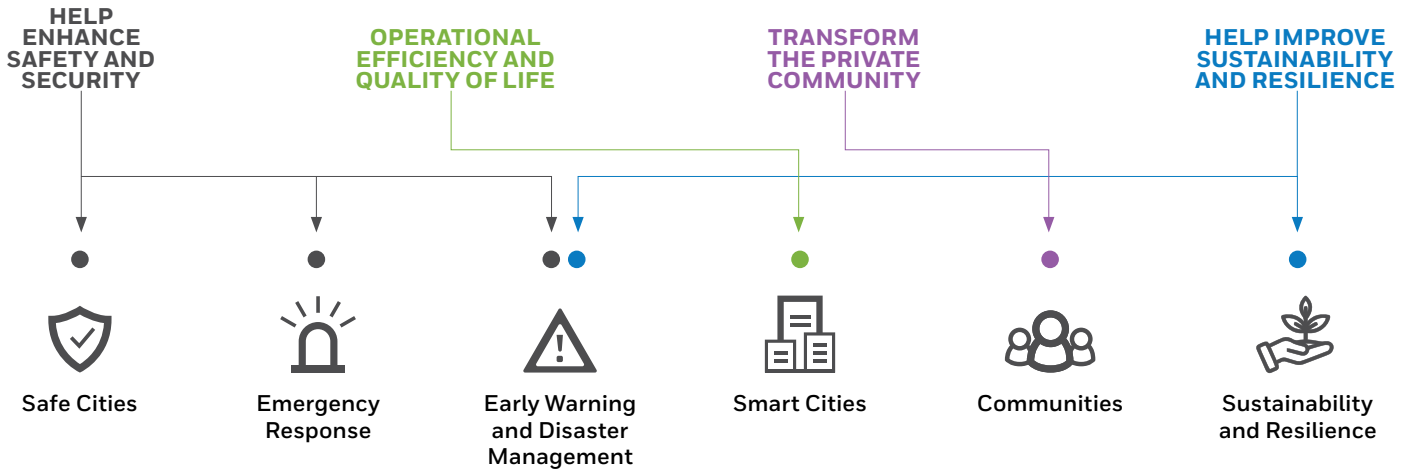


Smart Cities



# EMPOWER YOUR CITY TO BE SMARTER, SAFER, MORE RESILIENT AND SUSTAINABLE

## Choose the Honeywell City Suite Solutions That Match Your City's Goals



### For More Information

[buildings.honeywell.com/us/en/industries/smart-cities](https://buildings.honeywell.com/us/en/industries/smart-cities)

### Honeywell Building Technologies

715 Peachtree St. NE  
Atlanta, GA 30308  
[honeywell.com](https://honeywell.com)

Smart-Cities-SS | 01/23  
© 2023 Honeywell International Inc.

THE  
FUTURE  
IS  
WHAT  
WE  
MAKE IT

**Honeywell**