

## Product Information Note

### LIMS Viewer Laboratory Information Interface for Operations Staff



Honeywell's LIMS Viewer (LV), part of the Profit® Movement Suite, provides an interface to lab data for operations personnel to manage critical quality information for use in blending, movement management, and process control.

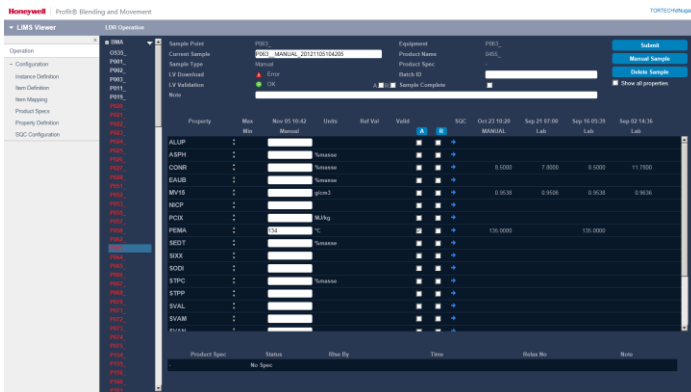
#### Benefits include:

- **Secure and timely review and approval** of quality data from a LIMS (Laboratory Information Management System) application.
- **Accurate distribution of approved lab results** within the control system for improved blending, movement management, and process control.
- **Improved process performance** by combining lab results with results from control applications, e.g. online blending systems, to ensure all available quality information is used for process improvement.

#### Key Capabilities

LIMS Viewer makes lab data available to operations personnel for review, approvals, and updates. Approved test results can then be downloaded for use in other applications and control systems. In addition, it can be used to view and download lab data from Honeywell's Business FLEX® LIMS application or any other third-party LIMS application. LV performs the following key functions:

- Notification of Sample Download Statuses
- View Property Information
- View Product Release Information
- View Validation Information
- Accept or Reject Lab Data
- Download Lab Data
- SQC Information



Detailed test result information for a selected sample can be easily viewed in LIMS Viewer.

These key capabilities are described below:

#### Notification of Sample Download Statuses

When a sample or property requires acceptance by an operator, an alarm or a message is generated. This alarm or message is viewed in the Experion® PKS system from the Experion Alarm Summary display. The message or alarm indicates that a new sample has arrived and needs to be accepted and downloaded.

#### View Property Information

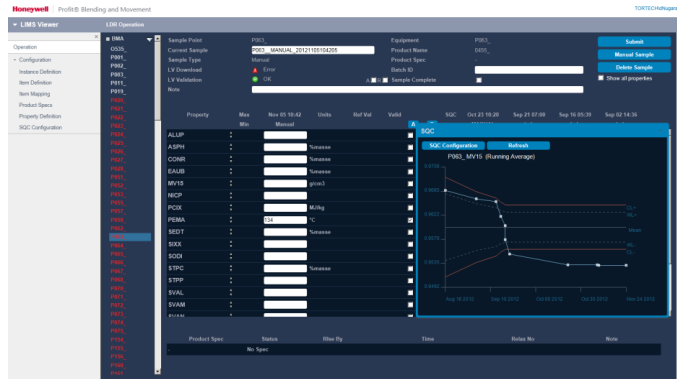
The samples collected in the lab are tested to determine their quality. The test results are then entered into the LIMS application. These test results can be viewed in the Properties tab. When new test results are entered in LIMS, the results are automatically updated and displayed in LIMS Viewer.

### View Product Release Information

Each sample includes a specification limit defined to determine the quality. The product specifications of samples are released by the lab operator in LIMS. After the specifications are released, the sample is certified and is ready for download.

### View Validation Information

All lab data items defined are validated. When an error occurs during validation, the corresponding value of a sample's property is indicated in red color. The user can either accept or reject the error and download the lab data.



Statistical Quality Control (SQC) plots are available within LIMS Viewer.

### Accept or Reject Lab Data

Pending Lab data can be accepted or rejected manually from LIMS Viewer. The user can accept or reject test result data and the product release information of samples, ignore the other validations and manually download lab data.

### Download Lab Data

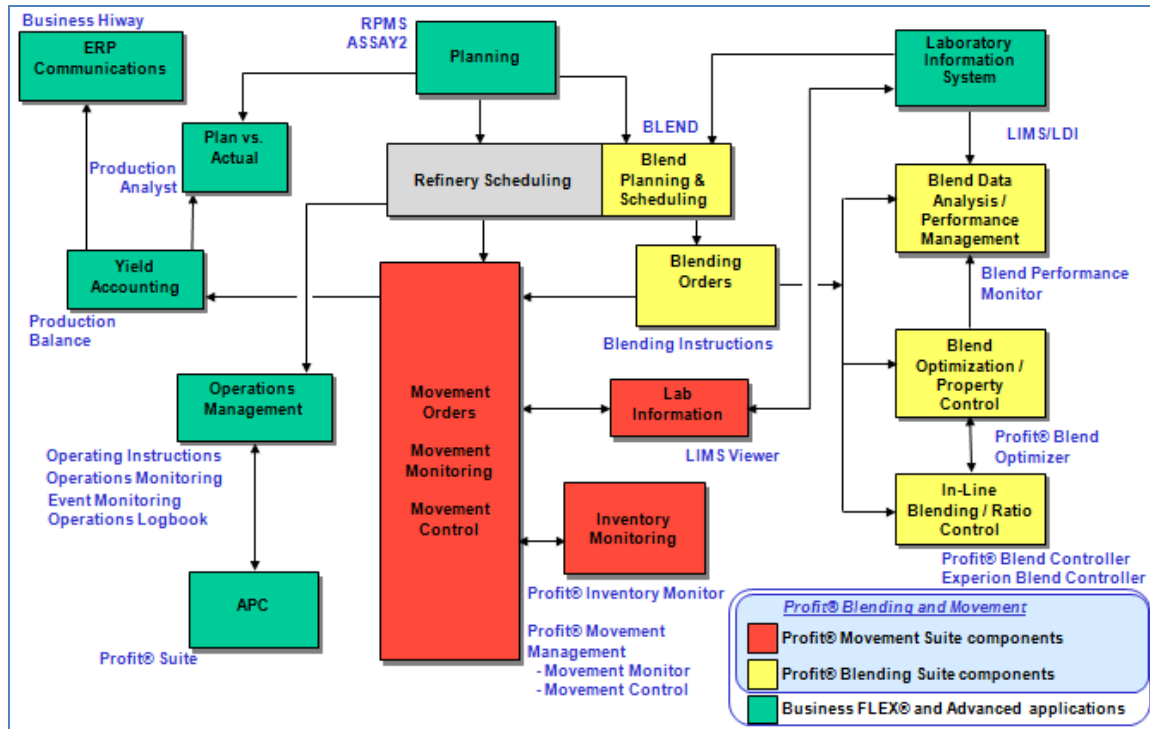
During download, all the lab data details are automatically downloaded by LIMS Viewer to the final destination such as the blend control system. These details include sample header, status information, test result, and product specification details of samples. The lab data that is pending or includes an error can be manually downloaded if desired.

### Integration with Honeywell Applications

The relationships between LIMS Viewer, the Profit® Blending and Movement Solution, and Profit Movement Suite, of which LIMS Viewer is a key component and other Honeywell applications, are shown below.

### SQC Information

Critical Statistical Quality Control (SQC) information such as Shewhart and CUSUM plots are easily viewed by the Operator within LIMS Viewer.



LIMS Viewer is a key component of Honeywell's Profit® Movement Suite and integrates with other Honeywell applications

### System Requirements and Architecture

The illustration below shows a typical LIMS Viewer system architecture where LV is installed in the context of a combined Experion PKS and business information system.

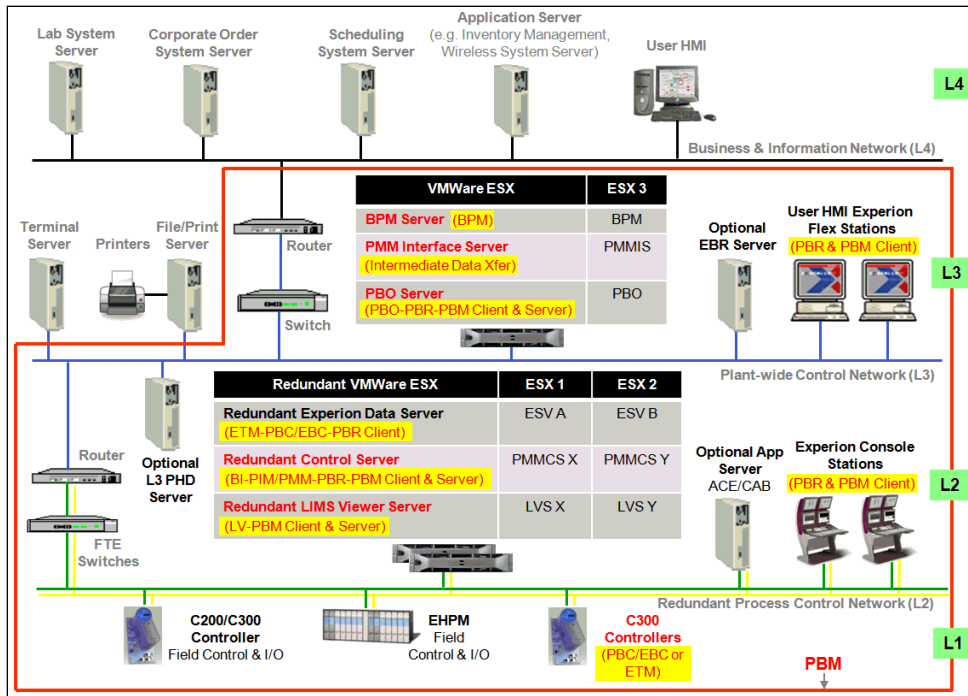
LIMS Viewer is installed on the LIMS Viewer Server, which typically requires Intel Xeon X5650 2.66 GHz Quad-Core or faster processors, with at least 4GB RAM and minimum 146 GB hard disk space. For specific Honeywell computer platforms and supported software that meet these requirements, please contact your Honeywell representative.

### Support Services

This product comes with worldwide, premium support services through our Benefits Guardianship Program (BGP). BGP is designed to help our customers to improve and extend the usage of their software and the benefits they deliver, ultimately maintaining and safeguarding their advanced software.

### Training Services

Training courses addressing Blend Performance Monitor implementation, use and maintenance are available through Honeywell's Automation College ([www.automationcollege.com](http://www.automationcollege.com)). On-site courses are also offered upon request.



Sample PBM System Architecture

### For More Information

Learn more about how Honeywell's LIMS Viewer can improve the performance of your operations. Visit our website [www.honeywellprocess.com/software](http://www.honeywellprocess.com/software) or contact your Honeywell account manager.

### Honeywell Process Solutions

Honeywell  
1250 West Sam Houston Parkway South  
Houston, TX 77042

Honeywell House, Arlington Business Park  
Bracknell, Berkshire, England RG12 1EB UK

Shanghai City Centre, 100 Junyi Road  
Shanghai, China 20051

[www.honeywellprocess.com](http://www.honeywellprocess.com)

Experion®, Business Flex®, and Profit® are registered trademarks, and Profit Suite is a trademark of Honeywell International Inc.

