

HONEYWELL TRACE™



A state-of-the-art change management system, Honeywell Trace™, leverages a patented data collection system that is capable of documenting data within hours – instead of days – leading to faster system set ups, quicker configuration change, accelerated project planning cycles and more informed decision making.

Leveraging a set of powerful search and analysis capabilities, Honeywell Trace™, also increase reliability, inspires confidence, and substantially improves the performance and effectiveness of the industrial process control network infrastructure.

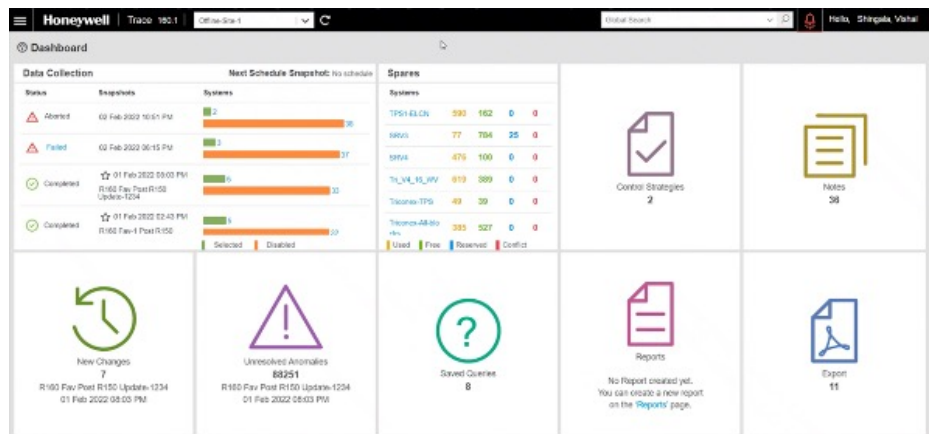
Honeywell

IMPROVE SYSTEM INSIGHT MAXIMIZE PERFORMANCE

With Smart Change Detection systems, Honeywell Trace™ is able to provide its users invaluable insights into control system configurations - highlighting critical dependencies and identifying interconnected associations - thus creating a complete and accurate representation of the process control workflow and helping reduce the risk of potential shutdowns during the performance of process modification exercises.

INCREASE OPERATIONAL EFFECTIVENESS AND PRODUCTIVITY

Honeywell Trace™ documents data up to 300 times more frequently than other solutions. Replacing paper-based records and spreadsheets with an automated process, Honeywell Trace™ provides greater, faster, deeper insight into system setup, configuration changes and system health for more efficient troubleshooting and project planning.



HOW DOES TRACE™ WORK?

Honeywell Trace™ records regular system snapshots for desired intervals, for as soon as every three to four hours and proactively detects and records changes. It offers configurable on-demand system performance assessments and smart change analysis with workflows.

With smart change tracking, Honeywell Trace™ proactively detects and records changes between snapshots, and automatically identifies anomalies to give you the insights you need for smoother, more efficient operations.

Users can quickly retrieve, analyze and compare time-stamped snapshots to identify configuration issues, assess performance impacts or identify and assign hardware status.

- **FASTER DATA COLLECTION**
- **ON-DEMAND SYSTEM ASSESSMENTS**
- **SMART CHANGE ANALYSIS WORKFLOWS**



HONEYWELL TRACE™ FEATURES:

- Snapshot comparisons help quickly identify unauthorized changes and engineering anomalies
- Reduces project planning
- Increase troubleshooting capabilities
- Smart change detection
- Provides easy sorting and filtering
- Reduces clutter in data
- Restricts unauthorized changes
- Prevents downtime

WHAT PROBLEMS DOES HONEYWELL TRACE™ SOLVE?

- Reduces configuration errors
- Improves troubleshooting
- Helps avoid unplanned shutdowns
- Captures experienced workers' knowledge
- Records control strategies
- Improves auditing and regulatory compliance

SMART CHANGE PROVES LESS IS MORE

Rather than automatically displaying every raw change, leaving it to users to manually filter the data to get the information they want, Honeywell Trace™ aggregates, groups and prioritizes changes to draw attention to those that are abnormal.

Honeywell Trace™ provides the ability to zoom into each parent level as well as view changes on an individual element, allowing users to identify important changes quicker and save time getting the data they need.

FIELD PROVEN TO DELIVER MEASURABLE RESULTS:

- Up to 80% reductions in documentation and maintenance overhead.
- 33% lower quality assurance project activities.
- Up to 33% FAT reduction.

HONEYWELL TRACE™ CAPABILITIES



- Automatic system snapshots
- Smart And Proactive Change Tracking



- Hardware, Network And Graphical Views
- Quick Review Dashboard
- Configurable tableviews
- Custom report generations



- Comprehensive Tag references and advanced parameter querying
- Loop Wiring Tabular View



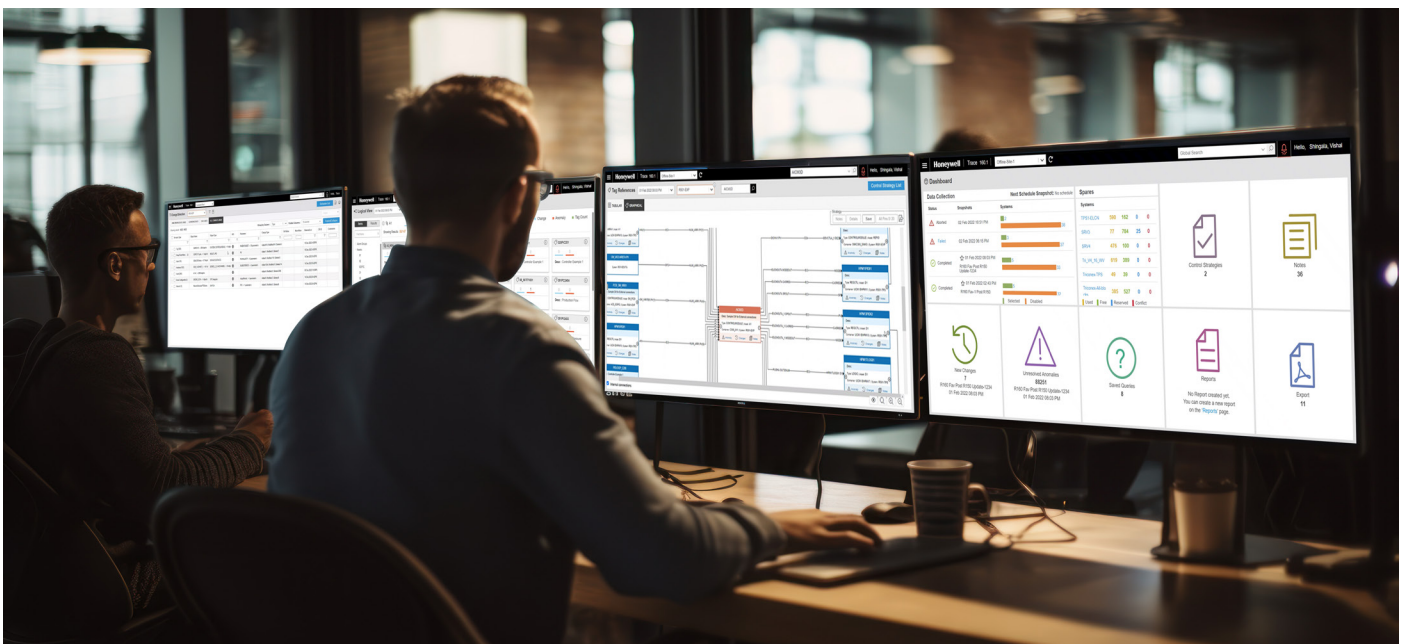
- Multi-Site Data Collection, UP TO 15 SITES and 2500 tags
- Secure Data Transfer From L3 To L3.4/L4,
- OPC UA protocol / customer defined



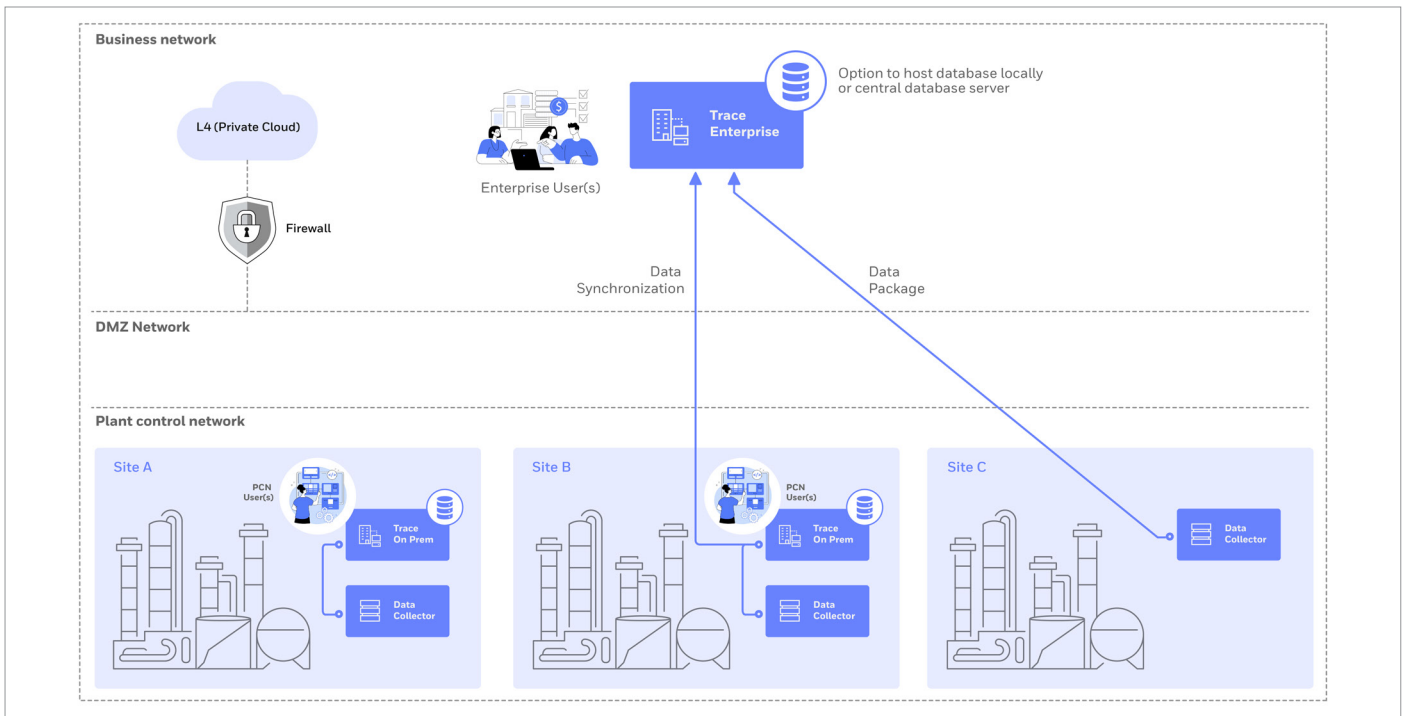
- Channel Spare Management



- Experion® Pks to Hive Support & Experion®
- Batch Documentation



ENTERPRISE TRACE ARCHITECTURE



FEATURES AND BENEFITS

Increase availability

- Accelerate troubleshooting.
- Identify configuration defects and anomalies.
- Minimize human errors.

Improve performance

- Drive best practices across the enterprise.
- Comply with control system configuration change management requirements.
- Document experienced workers' knowledge.

Unique features

- Record configuration changes daily.
- User-defined defects.
- Network and hardware topology views.
- Intuitive searches and queries without SQL.
- Multi-site data collection.

Quantifiable results

- Up to 40% reduction in manual troubleshooting.
- Fast data collection~ 4 to 6 hours - always have accurate information available.
- Zero impact to system during data collection.
- 20-50% fewer defects in quality assurance project activities.
- Single Server Deployment - Reduced project lifecycle costs, lower total costs of ownership and maintenance and realizing increased long run returns
- An automated data collection process that facilitates faster turnaround times and replaces error prone manual reporting methods

Versatile applications

- Comprehensive documentation management.
- Capture control strategies.
- Support disaster recovery.
- Improve auditing and regulatory compliance.
- Aids in project engineering and readiness.

For More Information

To learn more about how [Honeywell's Trace™](#) software.

Honeywell Process Solutions

2101 City West Blvd, Houston, TX 77042

Honeywell House, Skimped Hill Lane
Bracknell, Berkshire, England RG12 1EB UK

Building #1, 555 Huanke Road,
Zhangjiang Hi-Tech Industrial Park,
Pudong New Area, Shanghai 201203

process.honeywell.com

BRO-23-88-EN | 08/23
© 2023 Honeywell International Inc.

**THE
FUTURE
IS
WHAT
WE
MAKE IT**

Honeywell